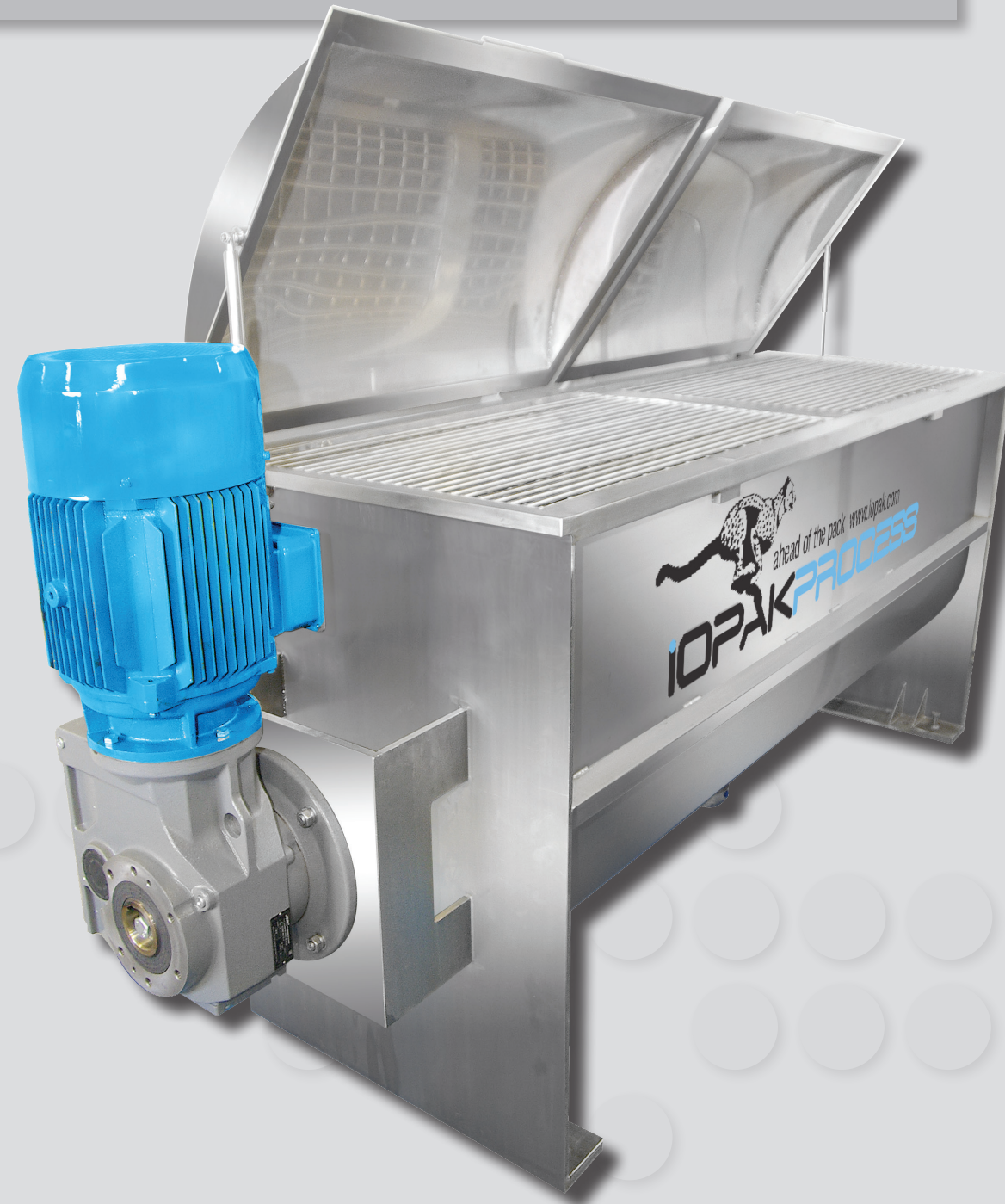


## iopak ahead of the pack

This brand new IOPAK 1000L fully stainless steel constructed blender is very well designed. It is suitable for most types of powder or dry ingredients (and even wet mixes).

NOTE: IF YOU WANT A LARGER OR SMALLER SIZE - JUST CALL OR EMAIL US. WE MAKE THE SIZE YOU REQUIRE IF POSSIBLE.

## S/S RIBBON BLENDER 1000L: MIX 1000



NEW & INNOVATIVE PRODUCTS



## S/S RIBBON BLENDER 1000L MIX 1000

STOCK ITEM: 8527G

### Specifications

- Double ribbon (contra flow) configuration.
- Outrigger bearing/stuffing box seal arrangements at both shaft endings.
- 150mm diameter pneumatically operated butterfly valve discharge.
- Substantial bar mesh guarding under a hitch up hinged lid arrangement.
- A 415V AC, Three Phase 11 kW, 29 (Output) RPM Gear motor (Worm wheel & Pinion) is direct coupled to the blender shaft.
- Overall Dimensions: 3,420 L x 1000 W x 1520 (mm) H
- Recommended Oil: TORA 220 or equivalent (if the gearbox is 7 years old or more, TORA 320 or equivalent)

\* Please note the price excludes electrical and safety work.

NEW & INNOVATIVE PRODUCTS

