

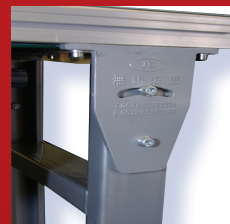
iopak ahead of the pack

This BRAND NEW IOPAK belt type conveyor is ready to go! Why search for a used conveyor when PPN is offering a choice of 3 at INCREDIBLY LOW PRICES.

This standard stock item with a sturdy aluminium frame is much favoured by the packaging industry.



ADJUSTABLE FEET



ADJUSTABLE LEGS



VARIABLE SPEED
CONTROL BOX



1.5 METRE FLAT BELT CONVEYOR: 300mm x 1500mm

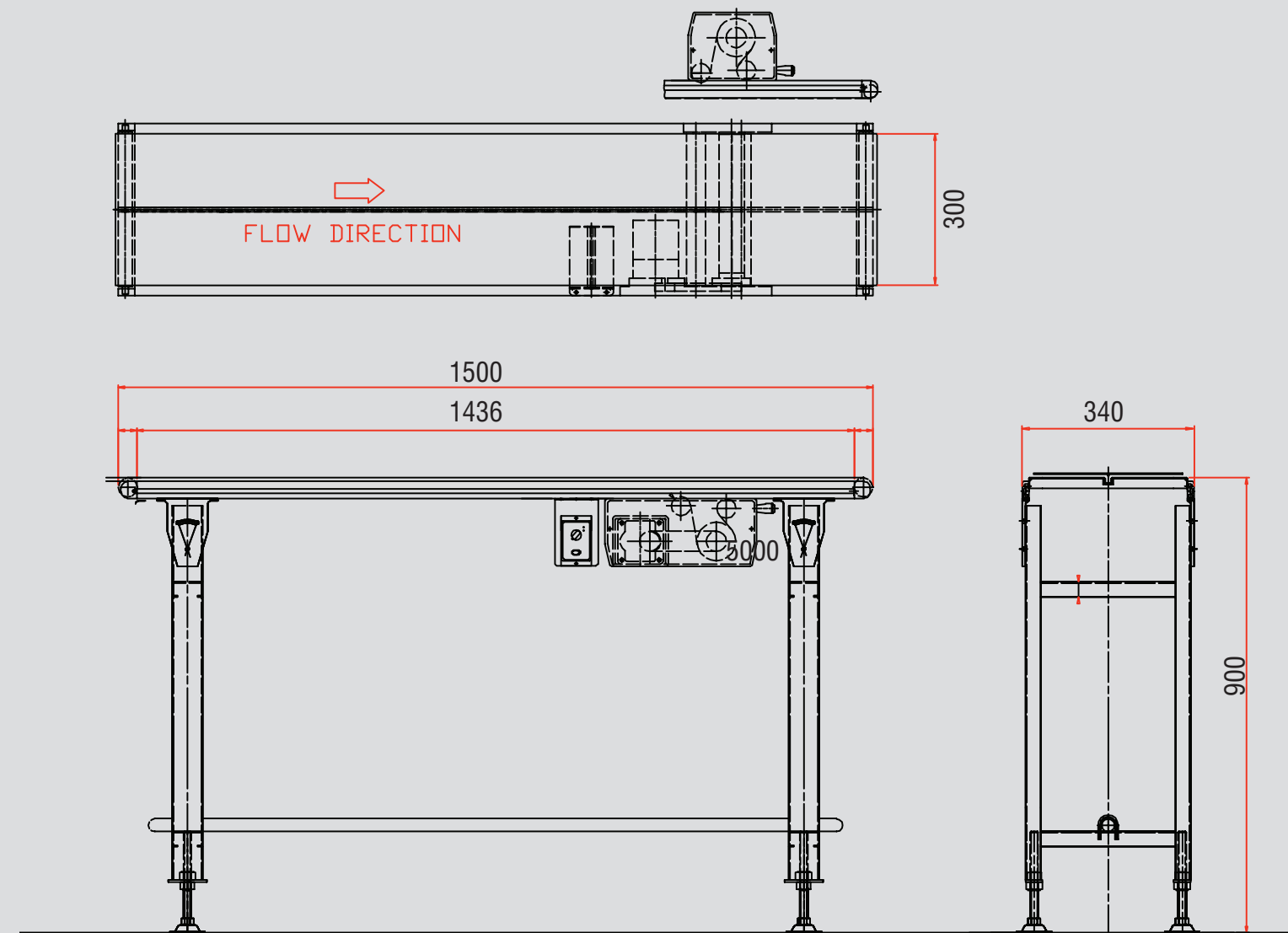


1.5 METER FLAT BELT CONVEYOR 300MM X 1500MM

STOCK ITEM: 15579G

Specifications

- Belt Width: 300mm
- Conveyor Width: 340mm
- Conveyor Length: 1500mmL
- Height above ground: 900mm
- Frame material: Aluminium
- Legs: Adjustable height
- Load Capacity (Max): 30kg
- Speed: Variable speed
- Ratio: 1/75.
- Speed (m/m): 0.31~6.1mm



PROCESSING & PACKAGING EQUIPMENT CUSTOM DESIGN SERVICES
For more information on this machines call sales: +61 3 9791 7011 or any others visit: www.iopak.com