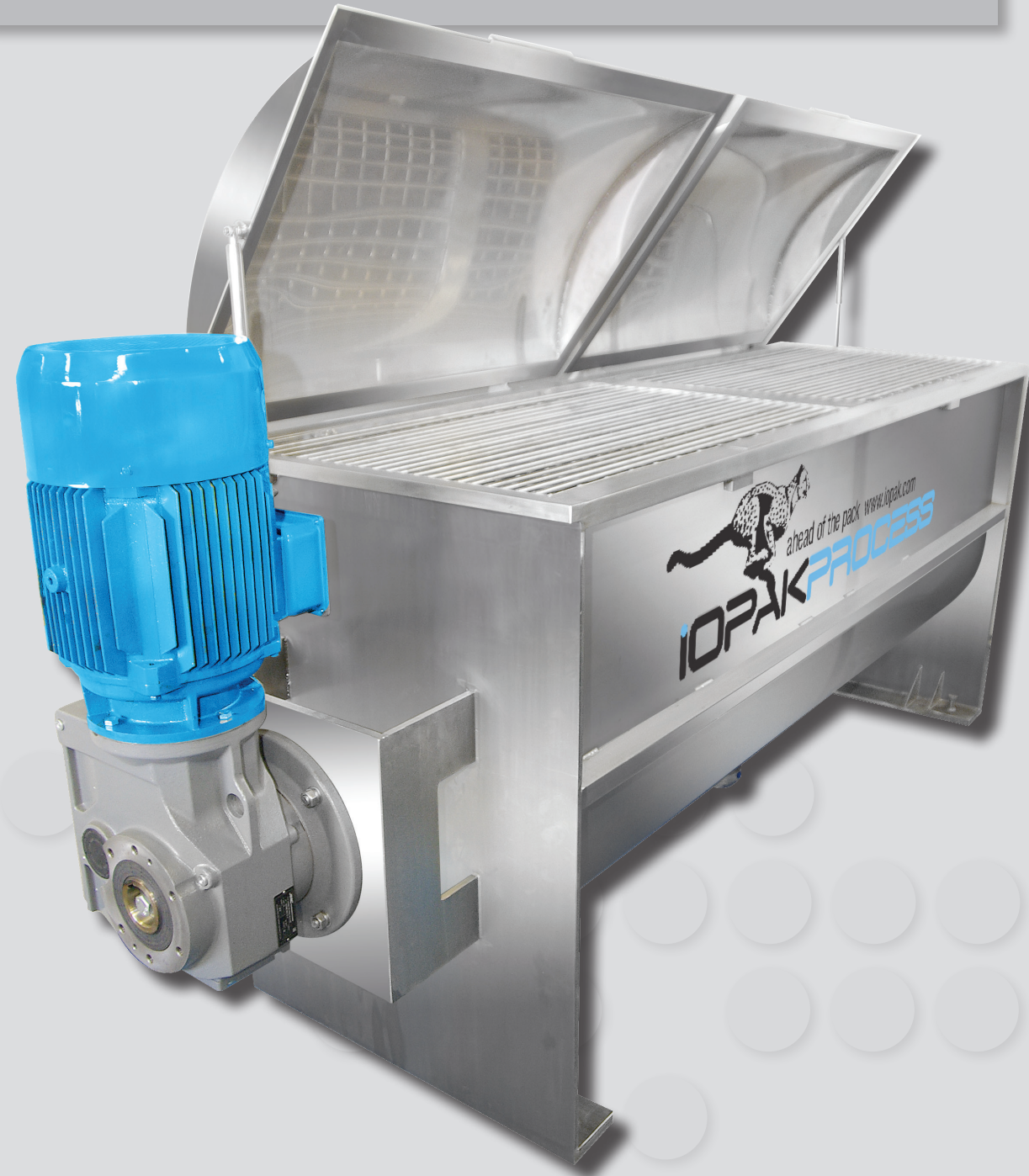


## iopak ahead of the pack

This brand new fully stainless steel constructed blender features double ribbon (contra flow) configuration, outrigger bearing/stuffing box seal arrangements at both shaft endings, 150mm dia pneumatically operated butterfly valve discharge, 150mm dia dust extraction port and substantial bar mesh guarding under a hitch up hinged lid arrangement.

NOTE: IF YOU WANT A LARGER OR SMALLER SIZE - JUST CALL OR EMAIL US. WE MAKE THE SIZE YOU REQUIRE IF POSSIBLE.

## S/S RIBBON BLENDER 2000L: MIX 2000



NEW & INNOVATIVE PRODUCTS



## S/S RIBBON BLENDER 2000L MIX 2000

STOCK ITEM: 13047G

### SPECIFICATIONS

- Working dimensions 2430 x 820 x 1150mm
- A 415V AC, Three Phase 15 KW, 29 (Output) RPM Gear motor (Worm wheel & Pinion) is direct coupled to the blender shaft.
- Recommended Oil: TORA 220 or equivalent (if the gearbox is 7 years old or more, TORA 320 or equivalent).
- Double ribbon (contra flow) configuration.
- Split Teflon seals for quick/easy change. Far more sanitary and EASY TO CLEAN
- 150mm diameter pneumatically operated butterfly valve discharge.
- Substantial bar mesh guarding under a hitch up hinged lid arrangement.
- Domed / curved lid with air struts for ease of lift and sturdy lid structure
- Working dimensions 2450 x 800 x 1150mm
- A 415V AC, Three Phase 15 KW, 29 (Output) RPM Gear motor (Worm wheel & Pinion) is direct coupled to the blender shaft.
- Please note the price excludes electrical and safety work.
- Recommended Oil: TORA 220 or equivalent (if the gearbox is 7 years old or more, TORA 320 or equivalent).

\* Please note the price excludes electrical and safety work.

NEW & INNOVATIVE PRODUCTS

